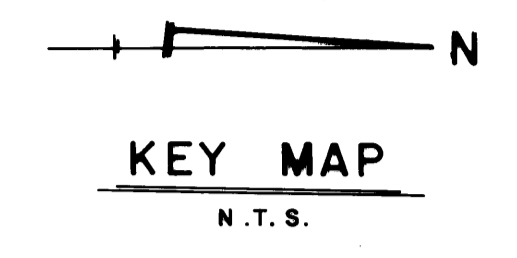
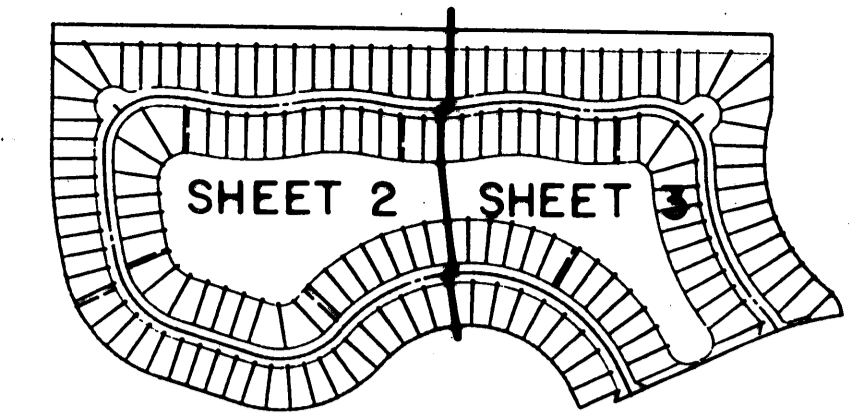
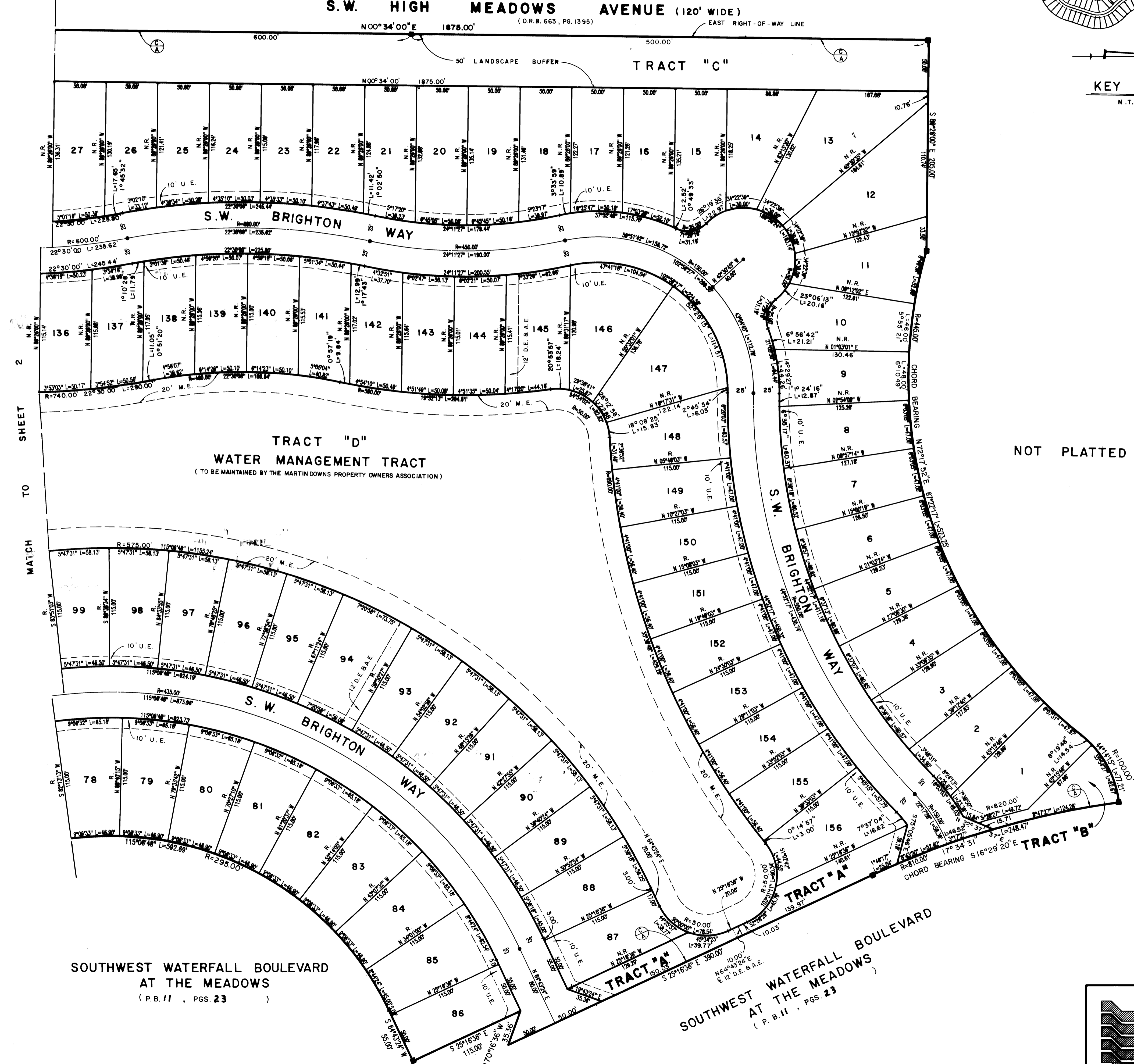


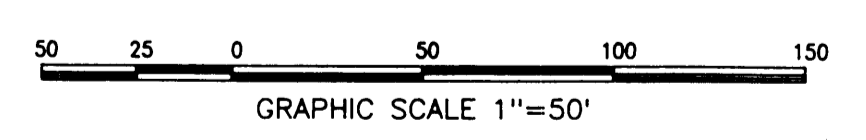
**A PLAT OF
PARCEL 51 AT THE MEADOWS**
BEING PLAT NO. 42 OF MARTIN DOWNS A P.U.D. LYING IN SECTION 12, TOWNSHIP 38 SOUTH, RANGE 40 EAST,
SHEET 3 OF 3
S.W. HIGH MEADOWS AVENUE (120' WIDE)
(O.R.B. 663, PG. 1395) EAST RIGHT-OF-WAY LINE
MARCH, 1988



I, MARSHA STILLER, CLERK OF THE CIRCUIT COURT OF MARTIN COUNTY, FLORIDA, HEREBY CERTIFY THAT THIS PLAT WAS FILED FOR RECORD IN PLAT BOOK 11, PAGE 30, MARTIN COUNTY, FLORIDA, PUBLIC RECORDS, THIS DAY OF A.D. 19 .
MARSHA STILLER, CLERK OF CIRCUIT COURT MARTIN COUNTY, FLORIDA
By: DEPUTY CLERK
FILE NO.

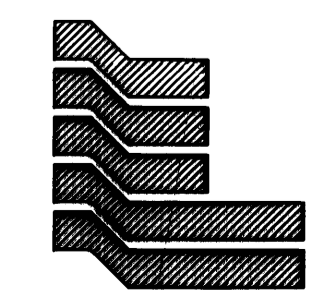


NOT PLATTED



**SOUTHWEST WATERFALL BOULEVARD
AT THE MEADOWS**
(P.B. 11 , PGS. 23)

**SOUTHWEST WATERFALL BOULEVARD
AT THE MEADOWS**
(P.B. 11 , PGS. 23)



Landmark Surveying & Mapping Inc.
1850 FOREST HILL BOULEVARD
PH. (305) 433-5405 SUITE 100 W.P.B. FLORIDA
PARCEL 51 AT THE MEADOWS